

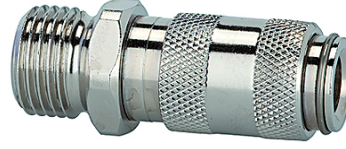
# K-SVKM NW 2,7 AG VA

Quick disconnect couplings DN 2.7, stainless steel 1.4404, male

**HANSA FLEX**

## Özellikler

Çalışma basıncı	0 - 35 bar, maximum static working pressure (non-pulsating)
Akış hava	165 l/min (at 6 bar and $\Delta p = 0.5$ bar)
Akışkan sıcaklığı	-15 °C to +200 °C
Mahfaza, kovan, valf gövdesi	Stainless steel 1.4404
Yay, patlama halkası, bilyeler	Stainless steel 1.4404
Yalıtım malzemesi	FKM



## Açıklama

Diğer bilgiler, istek üzerinedir.

## Açıklama

One-hand quick disconnect couplings, one side sealing, extremely compact with a large bore and only a small pressure drop. Ideal for: Medical equipment, chemical and pharmaceutical industry, laboratories, plant construction and butchers.

## Ürün

Tanım	Bağlantı	Uzunluk (mm)	SW (mm)
K- 07 35 12 45	M 5 male	26,0	9
K- 07 35 12 46	G 1/8 male	28,0	11