

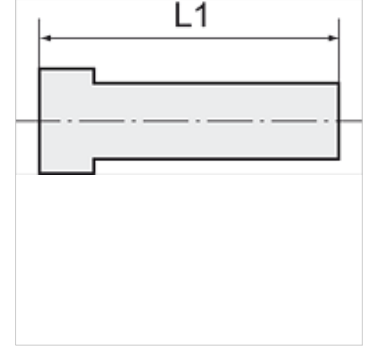
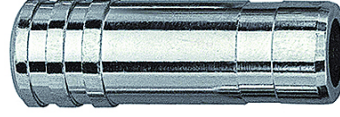
K-VST 1

Plugs

HANSA FLEX

Özellikler

Çalışma basıncı	Max. 16 bar
İşletim ısısı	-20 °C to +80 °C
Malzeme	Nikel kaplı pirinç



Açıklama

Diğer bilgiler, istek üzerinedir.

Açıklama

The advanced version of our highly successful push-in fittings series manufactured in nickel-plated brass. Advantages of this new, optimised series: Much easier connection and disconnection of the hose, even with repeated mounting, can also be used for non-calibrated hoses, suitable for vacuum operation.

Ürün

Tanım	Geçmeli nipel (mm)	L1 (mm)
K- 07 40 26 28	3	20,0
K- 07 40 26 29	4	27,0
K- 07 40 26 30	5	27,0
K- 07 40 26 33	6	29,8
K- 07 40 26 36	8	33,6
K- 07 40 26 37	10	36,8
K- 07 40 26 38	12	39,0
K- 07 40 26 40	14	39,5