

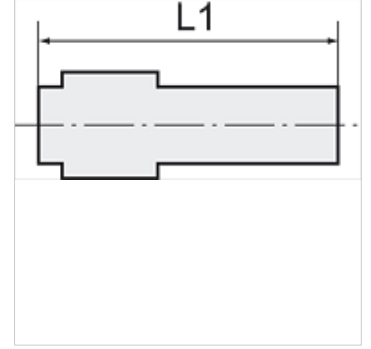
K-STECKVERBINDU ST RED 3

Reducers with push-in plug

HANSA FLEX

Özellikler

Çalışma basıncı	Max. 15 bar, coarse vacuum
Kullanım Alanı	Air, vacuum
tavsiye edilen hortumlar	PU or PA (nylon)
Akışkanlar	Compressed air and all gases or liquids that are compatible with the materials
Sıcaklık sahası	-20 °C to +80 °C
Malzeme	Plastic, Nickel plated brass
Bastırma halkası	Plastic



Açıklama

Diğer bilgiler, istek üzerinedir.

Açıklama

Push-in fittings series manufactured in plastic and nickel-plated brass. All parts are suitable for use with hoses, tubes or pipes made of plastic and copper.

Ürün

Tanım	Hortumun dış çapı için	L1 (mm)
K- 07 40 03 90	4 mm in (reduced 6 mm out)	39,5
K- 07 40 03 91	4 mm in (reduced 8 mm out)	41,5
K- 07 40 03 92	6 mm in (reduced 8 mm out)	41,5
K- 07 40 03 93	6 mm in (reduced 10 mm out)	46,5
K- 07 40 03 94	6 mm in (reduced 12 mm out)	40,5
K- 07 40 03 95	8 mm in (reduced 10 mm out)	46,8
K- 07 40 03 96	8 mm in (reduced 12 mm out)	46,8
K- 07 40 03 97	10 mm in (reduced 12 mm out)	52,2