

K-L-MEHRFACHVERT 3 DR AGR OR CLICK

Multiple union elbows with inner hex, 3 outlets, swivel type, parallel male thread with O-ring

HANSA FLEX

Özellikler

Çalışma basıncı Max. 16 bar

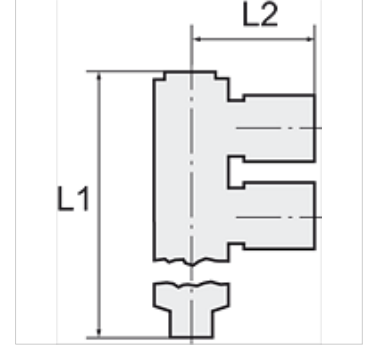
İşletim ısısı -20 °C to +80 °C

Malzeme Nikel kaplı pirinç

Bastırma halkası Hostaform

Conta halkası NBR

Germe halkası Stainless steel



Açıklama

Diğer bilgiler, istek üzerinedir.

Açıklama

The advanced version of our highly successful push-in fittings series manufactured in nickel-plated brass. Advantages of this new, optimised series: Much easier connection and disconnection of the hose, even with repeated mounting, can also be used for non-calibrated hoses, suitable for vacuum operation.

Ürün

Tanım	Mil	Hortumun dış çapı için	L1 (mm)	L2 (mm)	SW
K- 07 40 26 61	G 1/8	4 mm	56,7	20,2	3 mm
K- 07 40 26 62	G 1/8	6 mm	56,7	23,5	3 mm
K- 07 40 26 63	G 1/8	8 mm	56,7	24,8	3 mm
K- 07 40 26 59	G 1/4	6 mm	64,3	25,6	4 mm
K- 07 40 26 60	G 1/4	8 mm	64,3	26,5	4 mm
K- 07 40 26 58	G 1/4	10 mm	64,3	31,4	4 mm