

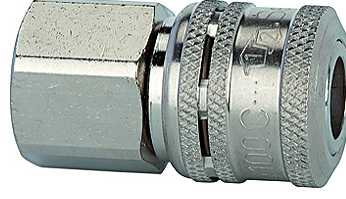
# K-LKM S NW7,2 IG

## Safety couplings DN 7.2, female

**HANSA FLEX**

### Özellikler

Çalışma basıncı	0 - 35 bar, maximum static working pressure (non-pulsating)
Akış hava	1.100 l/min (at $\Delta p = 0.5$ bar)
Akışkan sıcaklığı	-30 °C to +100 °C
Mahfaza, kovan, valf gövdesi	Nickel-plated brass
Yay, bilyeler	Stainless-steel
Yalıtım malzemesi	NBR



### Açıklama

Diğer bilgiler, istek üzerinedir.

### Açıklama

One-hand safety coupling with double locking mechanism. Connection: Similar to standard couplings, simply by pressing the plug into the coupling. Disconnection: The first locking mechanism is accessible when the sleeve is pushed back. The coupling valve closes. Air can then be relieved from the plug side (hose). The second locking mechanism is released by actuating the unlocking sleeve again. The coupling can now be disconnected.

### Ürün

Tanım	Bağlantı	Uzunluk (mm)	SW (mm)
K- 07 35 02 95	G 1/4 female	46,0	22
K- 07 35 02 96	G 3/8 female	46,0	22
K- 07 35 02 97	G 1/2 female	49,0	24

### Ek elemanlar

K-NIPPEL KUPPL NW7 AG VZ	Plugs for couplings DN 7.2 - DN 7.8, hardened, galvanised steel, male
K-NIPPEL KUPPL NW7 IG VZ 1	Plugs for couplings DN 7.2 - DN 7.8, hardened and galvanised steel, female
K-TUE 7,2 7,8 ST VZ 1	Stems for couplings DN 7.2 - DN 7.8, hardened, galvanised steel,