

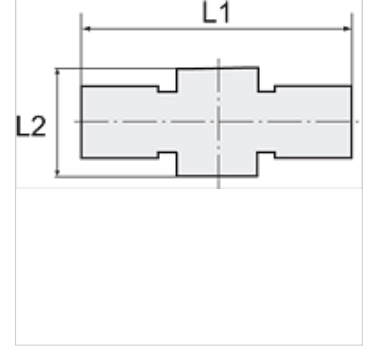
K-T-RINGSTUECK

T-ring nipples

HANSA FLEX

Özellikler

Çalışma basıncı	Max. 16 bar
İşletim ısısı	-20 °C to +70°C
Malzeme	Nikel kaplı pirinç
Bastırma halkası	Hostaform
Germe halkası	Stainless steel



Açıklama

Diğer bilgiler, istek üzerinedir.

Açıklama

The advanced version of our highly successful push-in fittings series manufactured in nickel-plated brass. Advantages of this new, optimised series: Much easier connection and disconnection of the hose, even with repeated mounting, can also be used for non-calibrated hoses, suitable for vacuum operation.

Ürün

Tanım	İçi boş vida için	Hortumun dış çapı için	L1 (mm)	L2 (mm)
K- 07 40 26 93	M 5	4 mm	36,0	9,0
K- 07 40 26 97	G 1/8	4 mm	42,0	15,0
K- 07 40 26 98	G 1/8	6 mm	46,0	15,0
K- 07 40 26 99	G 1/8	8 mm	49,0	15,0
K- 07 40 26 95	G 1/4	6 mm	48,0	17,0
K- 07 40 26 96	G 1/4	8 mm	52,0	17,0
K- 07 40 26 94	G 1/4	10 mm	52,0	17,0
K- 07 40 27 02	G 3/8	8 mm	54,0	20,0
K- 07 40 27 00	G 3/8	10 mm	56,0	20,0
K- 07 40 27 01	G 3/8	12 mm	58,0	20,0