

K-EST 12 MS

Male stems for coupling NW12 MS

HANSA FLEX

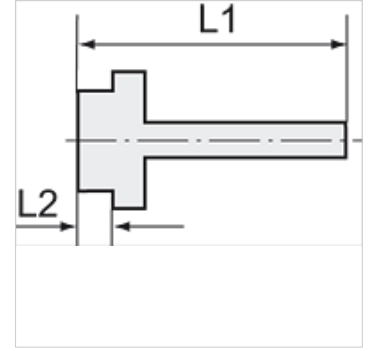
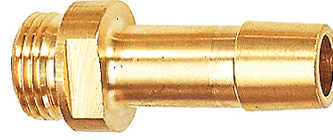
Özellikler

Çalışma basıncı 10 bar

Akışkan sıcaklığı max. +90 °C

Ortam sıcaklığı Max. +90 °C

Malzeme Brass with a bare metal surface



Açıklama

The dimensions of the standard screw fittings may change slightly during the life of the catalogue as a result of optimisation processes. Diğer bilgiler, istek üzerinedir.

Ek bilgiler

Further types and dimensions on request.

Ürün

Tanım	Mil	Hortum için	L1 (mm)	L2 (mm)	SW
K- 07 35 00 88	G 1/2	LW 16 mm	58,0	10,0	20 mm