

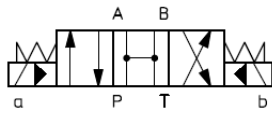
# HK DPH 2

Wegeventil NG16

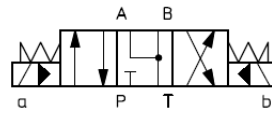
Directional valve Size 16

**HANSA FLEX**

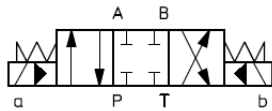
## Schaltsymbole, Ausführungen / Symbols, Design



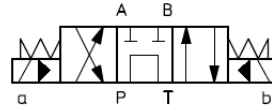
HK DPH 2710 DR SPIL



HK DPH 2713 D SPIL



HK DPH 2711 D SPIL



HK DPH 2714 DR SPIL

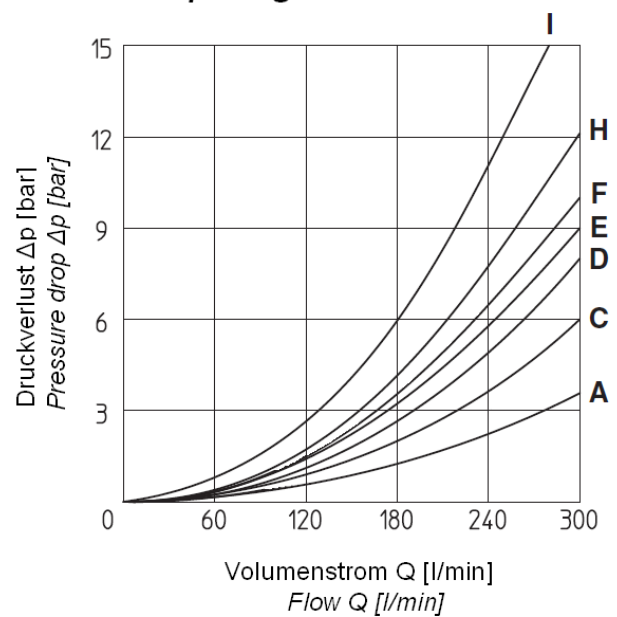
## Kolbentypen, Durchflussrichtungen, Q/Δp – Kennlinien / Spool type, flow direction, Q/Δp - diagram

### HK DPH 2

Kolbentyp Spool type	Durchflussrichtung Flow direction				
	P→A	P→B	A→T	B→T	P→T
1, 3	A	A	D	A	-
0	A	A	D	E	C
4	C	C	H	I	F

### Q/Δp Diagramm

### Q/Δp Diagram



# HK DPH 2

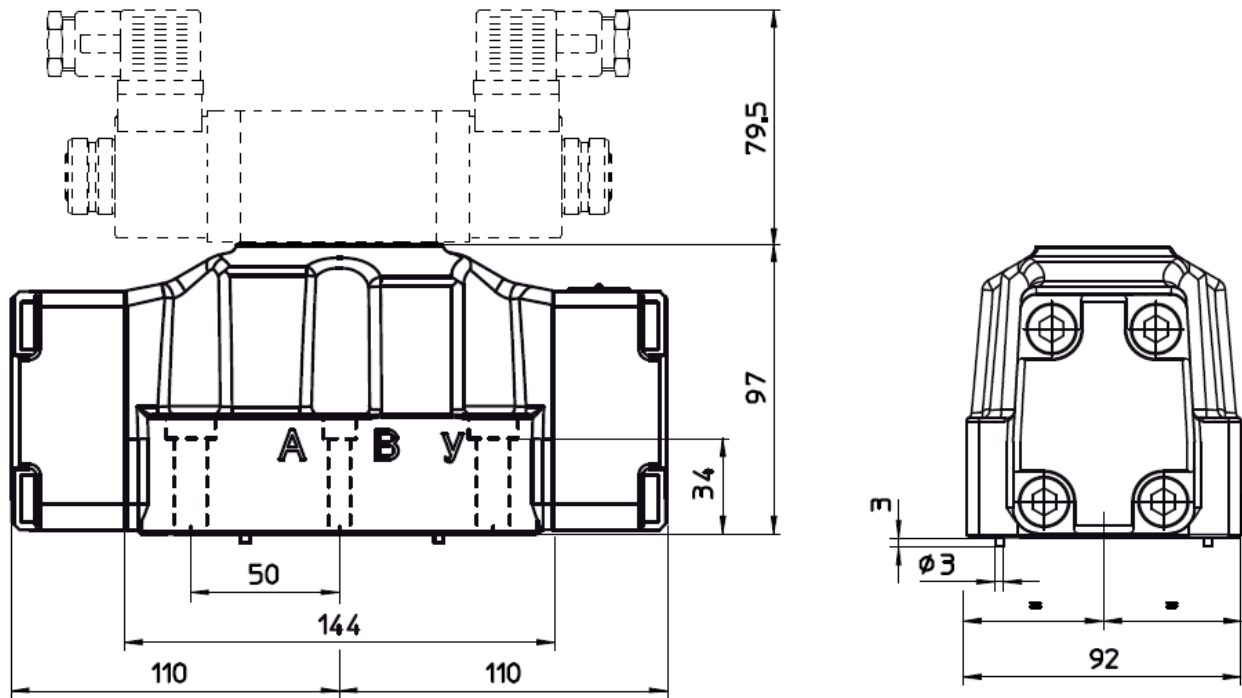
Wegeventil NG16

Directional valve Size 16

**HANSA FLEX**

Abmessungen / Dimensions

## HK DPH 2



Schraubensatz: 4 Inbusschrauben M10x50 und 2 Inbusschrauben M6x40 12.9

*Screw set: 4 socket head screws M10x50 and 2 socket head screws M6x40 12.9*