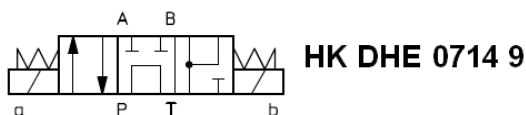
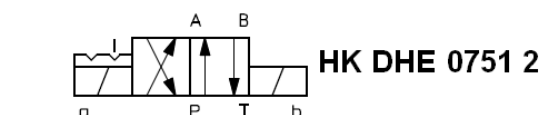
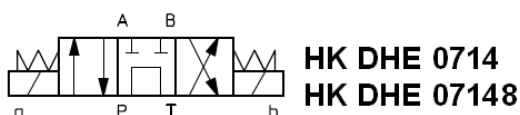
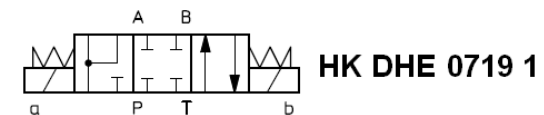
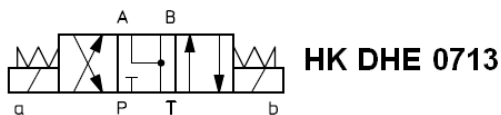
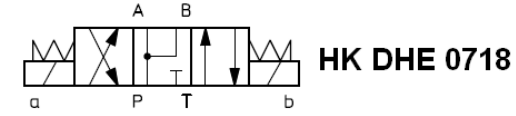
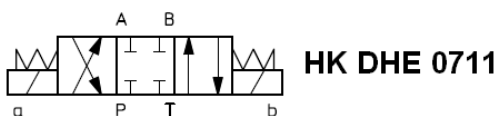
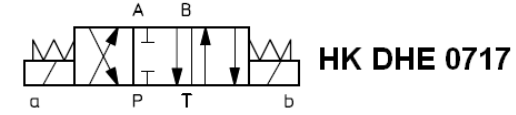
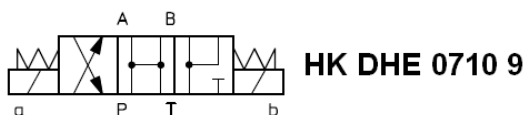
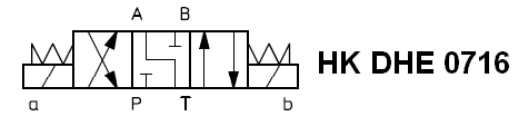
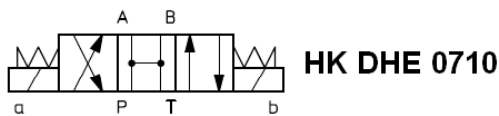
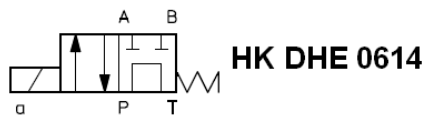
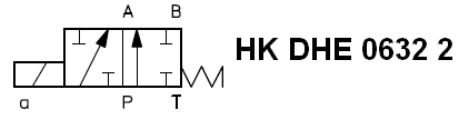
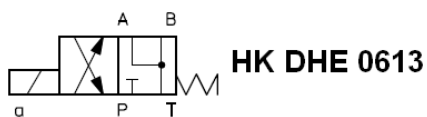
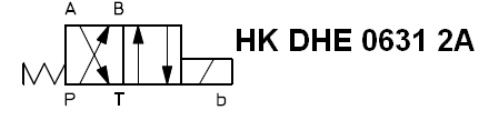
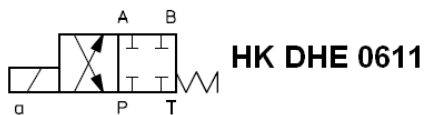
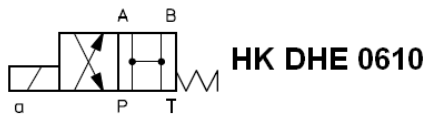


HK DHE X 00 DC / HK DHE X 00 AC

Magnetwegeventil NG6 HKDHE
Solenoid valve Size6 HKDHE



Schaltensymbole, Ausführungen / Symbols, Design



HK DHE X 00 DC / HK DHE X 00 AC

Magnetwegeventil NG6 HKDHE
Solenoid valve Size6 HKDHE



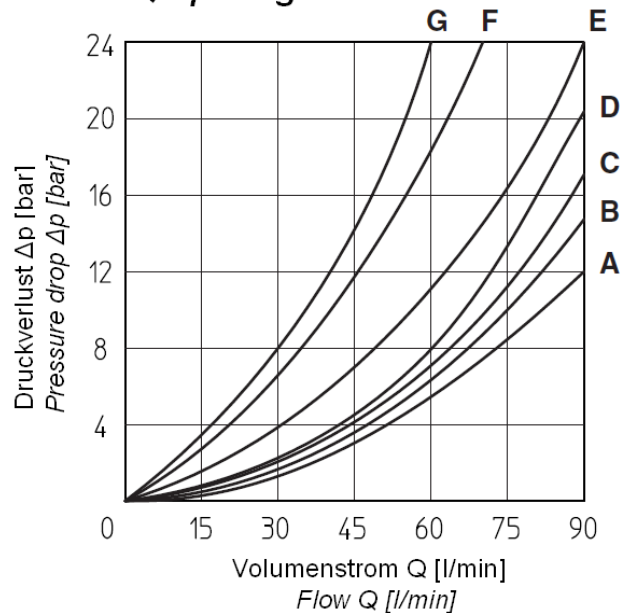
Kolbentypen, Durchflussrichtungen, Q/Δp – Kennlinien / Spool type, flow direction, Q/Δp - diagram

HK DHE

Durchflussrichtung Flow direction	Kolbentyp Spool type				
	P→A	P→B	A→T	B→T	P→T
0, 0/1	A	A	C	C	D
1, 1/1	D	C	C	C	
3, 3/1	D	D	A	A	
4, 4/8, 5, 5/1, 09, 49, 91	F	F	G	C	E
1/2, 0/2	D	D	D	D	
6, 7	D	D	D	D	
8	A	A	E	E	
2	D	D			
2/2	F	F			

Q/Δp Diagramm

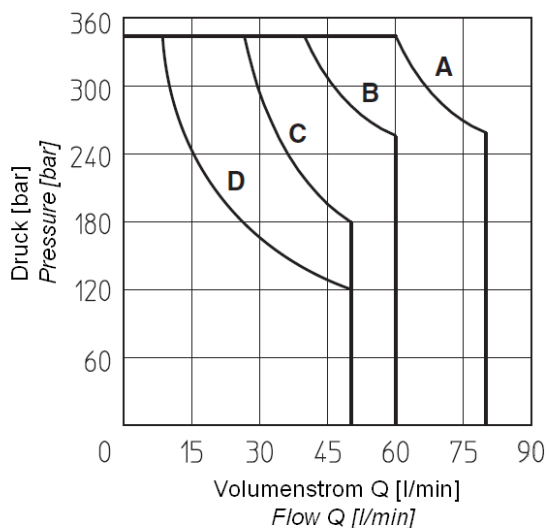
Q/Δp Diagram



Diagramme, Kennlinien / Diagram, chart

Schaltleistungsgrenzen / Operating limits

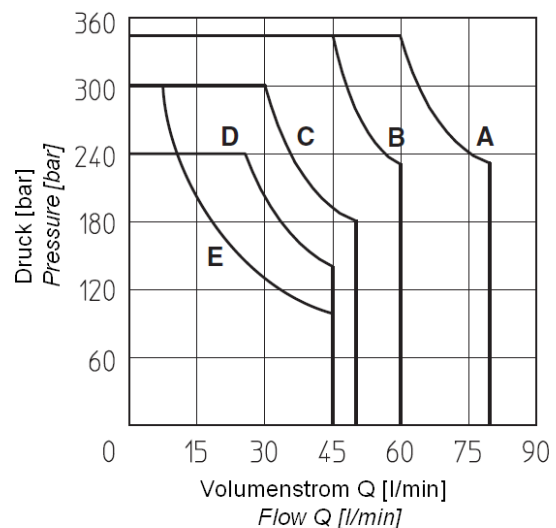
HK DHE - DC



Kolbentypen / Spool type

- A - 0, 0/1, 1, 1/2, 2, 3, 8
- B - 0/2, 1/1, 6, 7
- C - 3/1, 4, 4/8, 5, 5/1, 19, 09, 49, 91, 93
- D - 2/2

HK DHE - AC



Kolbentypen / Spool type

- A - 1, 1/2, 2, 8
- B - 0, 0/1, 0/2, 1/1
- C - 3, 3/1
- D - 4, 4/8, 5, 5/1, 6, 7, 19, 09, 49, 91, 93
- E - 2/2

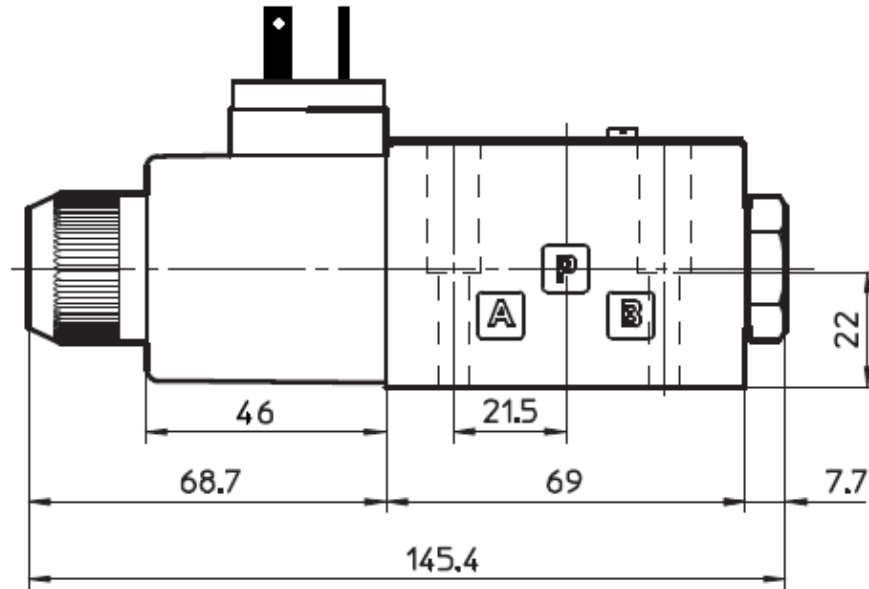
HK DHE X 00 DC / HK DHE X 00 AC

Magnetwegeventil NG6 HKDHE
Solenoid valve Size6 HKDHE

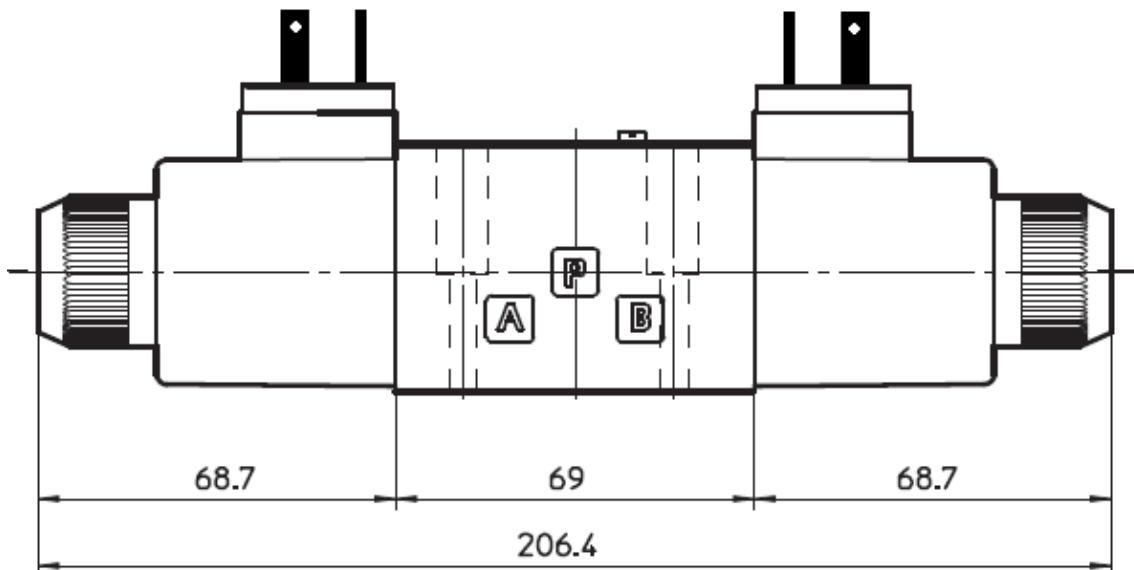
HANSA FLEX

Abmessungen / Dimensions

HK DHE 06 AC



HK DHE 07 AC



Schraubensatz: 4 Inbusschrauben M5x30 12.9

Screw set: 4 socket head screws M5x30 12.9

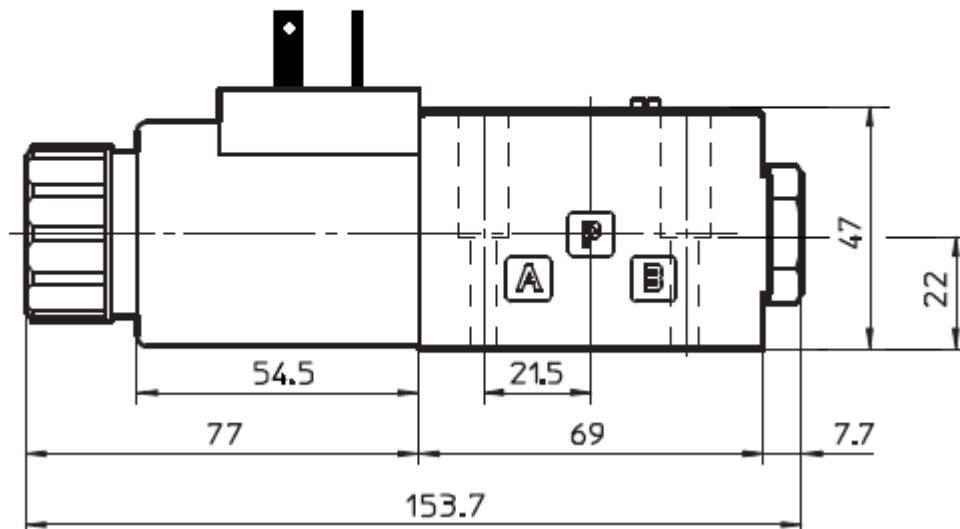
HK DHE X 00 DC / HK DHE X 00 AC

Magnetwegeventil NG6 HKDHE
Solenoid valve Size6 HKDHE

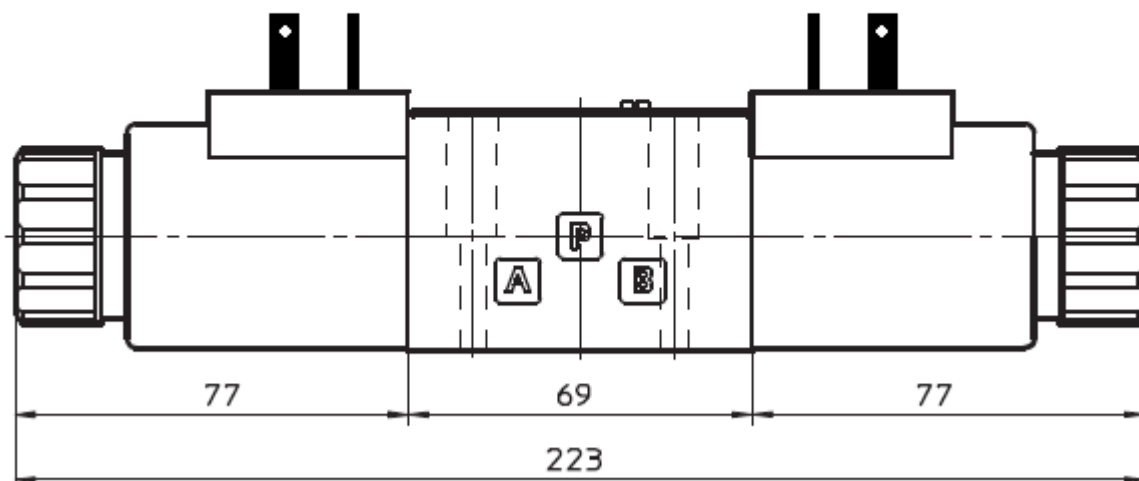
HANSA FLEX

Abmessungen / Dimensions

HK DHE 06 DC



HK DHE 07 DC



Schraubensatz: 4 Inbusschrauben M5x30 12.9

Screw set: 4 socket head screws M5x30 12.9