

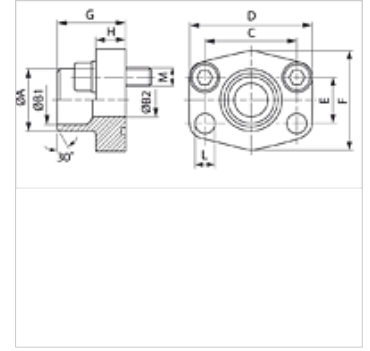
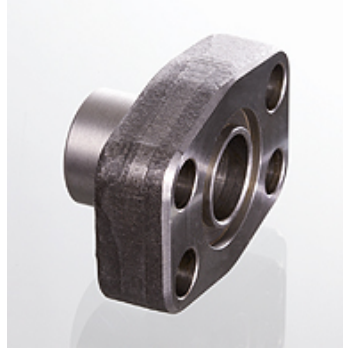
AFS STRE (3000 PSI)

SAE焊接环

HANSA FLEX

属性

| | |
|--------|-------------------------|
| 压力系列 | 3000 psi |
| 标准 | SAE J 518 C ISO 6162 |
| 结构类型补充 | ND 40 |
| 结构形式 | 直道 |
| 结构类型 | SAE焊接束 |
| 固定 | 螺钉钻孔 |
| 供货范围 | 仅法兰 |
| 原料 | S355J2G3 (ST52.3) |
| 表面保护 | 经黑色润滑油处理 |



提示

给出的最大工作压力针对的是法兰!实际工作压力视管(壁厚)和管的品质而定!
推荐使用的螺钉在M(米制)或M(unc)列中列出。

货品

| 名称 | PB 10.9 (bar) | 结构尺寸 管 | A (mm) | B1 (mm) | B2 (mm) | G (mm) | C (mm) | E (mm) | H (mm) | L (mm) | M 米制 | M unc | |
|----------------------|------------------|-----------|------------|------------|------------|-----------|-----------|-----------|-----------|-----------|------|-----------|----------------|
| AFS 80 STRE 21.3 | 350 | 1/2" | 21.3 x 2.6 | 22 | 16,0 | 13 | 35,0 | 38,1 | 17,5 | 16,0 | 9,0 | M 8 x 30 | 5/16" x 1.1/4" |
| AFS 100 STRE 26.9 | 350 | 3/4" | 26.9 x 2.6 | 28 | 21,5 | 19 | 36,0 | 47,6 | 22,3 | 18,0 | 11,0 | M 10 x 35 | 3/8" x 1.1/2" |
| AFS 102 STRE 33.7 | 315 | 1" | 33.7 x 3.2 | 35 | 27,0 | 25 | 38,0 | 52,4 | 26,2 | 18,0 | 11,0 | M 10 x 35 | 3/8" x 1.1/2" |
| AFS 104 STRE 42.2 | 250 | 1.1/4" | 42.4 x 3.2 | 43 | 36,0 | 31 | 41,0 | 58,7 | 30,2 | 21,0 | 11,5 | M 10 x 40 | 7/16" x 1.1/2" |
| AFS 106 STRE 48.3 | 200 | 1.1/2" | 48.3 x 3.2 | 49 | 42,0 | 38 | 44,0 | 69,9 | 35,7 | 25,0 | 13,5 | M 12 x 45 | 1/2" x 1.3/4" |
| AFS 108 STRE 48.3 | 200 | 2" | 48.3 x 3.2 | 49 | 42,0 | 42 | 45,0 | 77,8 | 42,9 | 25,0 | 13,5 | M 12 x 45 | 1/2" x 1.3/4" |
| AFS 108 STRE 60.3 | 200 | 2" | 60.3 x 3.6 | 61 | 53,0 | 49 | 45,0 | 77,8 | 42,9 | 25,0 | 13,5 | M 12 x 45 | 1/2" x 1.3/4" |
| AFS 110 STRE 60.3 | 160 | 2.1/2" | 60.3 x 3.6 | 61 | 53,0 | 53 | 50,0 | 88,9 | 50,8 | 25,0 | 13,5 | M 12 x 45 | 1/2" x 1.3/4" |
| AFS 110 STRE 76.1 | 160 | 2.1/2" | 76.1 x 3.6 | 77 | 70,0 | 62 | 50,0 | 88,9 | 50,8 | 25,0 | 13,5 | M 12 x 45 | 1/2" x 1.3/4" |
| AFS 112 STRE 88.9 | 138 | 3" | 88.9 x 3.6 | 90 | 82,0 | 74 | 51,0 | 106,4 | 61,9 | 26,0 | 17,5 | M 16 x 50 | 5/8" x 2" |
| AFS 114 STRE 76.1 | 35 | 3.1/2" | 76.1 x 3.6 | 77 | 70,0 | 70 | 48,0 | 120,7 | 69,9 | 26,0 | 17,5 | M 16 x 50 | 5/8" x 2" |
| AFS 114 STRE 88.9 | 35 | 3.1/2" | 88.9 x 3.6 | 90 | 82,0 | 82 | 48,0 | 120,7 | 69,9 | 26,0 | 17,5 | M 16 x 50 | 5/8" x 2" |
| AFS 116 STRE 114.3 | 35 | 4" | 114 x 3.6 | 115 | 107,0 | 102 | 48,0 | 130,2 | 77,8 | 26,0 | 17,5 | M 16 x 50 | 5/8" x 2" |
| AFS 116 STRE 88.9 | 35 | 4" | 88.9 x 3.6 | 90 | 82,0 | 82 | 48,0 | 130,2 | 77,8 | 26,0 | 17,5 | M 16 x 50 | 5/8" x 2" |
| AFS 118 STRE 139.7 * | 35 | 5" | 139.7 x 4 | 131 | 120,0 | 131 | 28,0 | 152,4 | 92,1 | 28,0 | 17,5 | M 16 x 55 | 5/8" x 2" |

PN = 额定压力 PB = 最大工作压力 - *) AFS 118 STRE 139.7: 扁平法兰结构用于焊入。

产品变体

| | |
|-----------------------|------------------------|
| AFS STRE M (3000 PSI) | SAE焊接环, 带米制螺钉组件和O形圈 |
| AFS STRE U (3000 PSI) | SAE焊接环, 带UNC标准螺钉组件和O形圈 |