

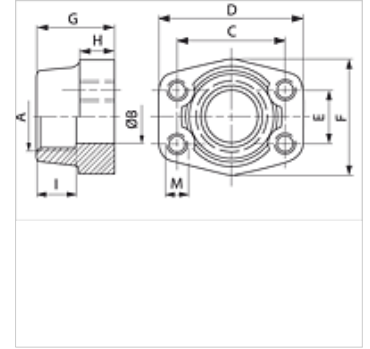
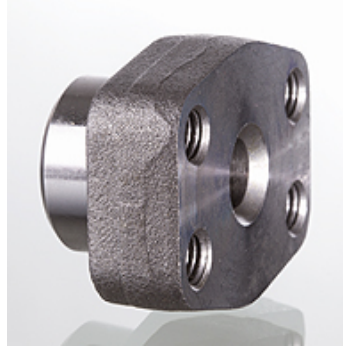
# GFS G M (3000 / 6000 PSI)

SAE旋入式对接法兰, BSP

**HANSA FLEX**

## 属性

|      |                         |
|------|-------------------------|
| 标准   | SAE J 518 C<br>ISO 6162 |
| 结构形式 | 直道                      |
| 结构类型 | SAE旋入式对接法兰              |
| 固定   | 米制螺钉用内螺纹                |
| 供货范围 | 仅法兰                     |
| 原料   | S355J2G3 (ST52.3)       |
| 表面保护 | 经黑色润滑油处理                |



## 提示

给出的最大工作压力针对的是法兰!实际工作压力视管(壁厚)和管的品质而定!

## 货品

| 名称              | 压力系列     | PB 10.9<br>(bar) | 结构尺寸   | A            | Ø B<br>(mm) | C<br>(mm) | D<br>(mm) | E<br>(mm) | F<br>(mm) | G<br>(mm) | H<br>(mm) | I<br>(mm) | M 米制 |
|-----------------|----------|------------------|--------|--------------|-------------|-----------|-----------|-----------|-----------|-----------|-----------|-----------|------|
| GFS 80 G        | 3000 PSI | 350              | 1/2"   | G 1/2" -14   | 13          | 38,1      | 54        | 17,5      | 46        | 36        | 16        | 19        | M 8  |
| GFS 80 G 3/8    | 3000 PSI | 350              | 1/2"   | G 3/8" -19   | 13          | 38,1      | 54        | 17,5      | 46        | 36        | 16        | 19        | M 8  |
| GFS 100 G       | 3000 PSI | 350              | 3/4"   | G 3/4" -14   | 19          | 47,6      | 65        | 22,2      | 50        | 36        | 18        | 19        | M 10 |
| GFS 100 G 1/2   | 3000 PSI | 350              | 3/4"   | G 1/2" -14   | 13          | 47,6      | 65        | 22,2      | 50        | 36        | 18        | 19        | M 10 |
| GFS 102 G       | 3000 PSI | 315              | 1"     | G 1" -11     | 25          | 52,4      | 70        | 26,2      | 55        | 38        | 18        | 22        | M 10 |
| GFS 102 G 3/4   | 3000 PSI | 315              | 1"     | G 3/4" -14   | 19          | 52,4      | 70        | 26,2      | 55        | 35        | 21        | 19        | M 10 |
| GFS 104 G       | 3000 PSI | 250              | 1.1/4" | G 1.1/4" -11 | 32          | 58,7      | 79        | 30,2      | 68        | 41        | 21        | 22        | M 10 |
| GFS 104 G 1     | 3000 PSI | 250              | 1.1/4" | G 1" -11     | 25          | 58,7      | 81        | 30,2      | 65        | 42        | 25        | 22        | M 10 |
| GFS 106 G       | 3000 PSI | 200              | 1.1/2" | G 1.1/2" -11 | 38          | 69,9      | 93        | 35,7      | 78        | 45        | 25        | 24        | M 12 |
| GFS 106 G 1 1/4 | 3000 PSI | 200              | 1.1/2" | G 1.1/4" -11 | 32          | 69,9      | 95        | 35,7      | 78        | 45        | 27        | 24        | M 12 |
| GFS 108 G       | 3000 PSI | 200              | 2"     | G 2" -11     | 51          | 77,8      | 102       | 42,9      | 90        | 45        | 25        | 30        | M 12 |
| GFS 108 G 1 1/2 | 3000 PSI | 200              | 2"     | G 1.1/2" -11 | 38          | 77,8      | 102       | 42,9      | 90        | 45        | 25        | 26        | M 12 |
| GFS 110 G       | 3000 PSI | 160              | 2.1/2" | G 2.1/2" -11 | 63          | 88,9      | 114       | 50,8      | 105       | 50        | 25        | 30        | M 12 |
| GFS 110 G 2     | 3000 PSI | 160              | 2.1/2" | G 2" -11     | 51          | 88,9      | 114       | 50,8      | 105       | 50        | 25        | 30        | M 12 |
| GFS 112 G       | 3000 PSI | 138              | 3"     | G 3" -11     | 73          | 106,4     | 134       | 61,9      | 124       | 50        | 27        | 34        | M 16 |
| GFS 112 G 2 1/2 | 3000 PSI | 138              | 3"     | G 2.1/2" -11 | 63          | 106,4     | 134       | 61,9      | 124       | 50        | 27        | 30        | M 16 |
| GFS 114 G       | 3000 PSI | 35               | 3.1/2" | G 3.1/2" -11 | 89          | 120,7     | 152       | 69,9      | 136       | 48        | 27        | 34        | M 16 |
| GFS 114 G 3     | 3000 PSI | 35               | 3.1/2" | G 3" -11     | 73          | 120,7     | 152       | 69,9      | 136       | 48        | 27        | 34        | M 16 |
| GFS 116 G       | 3000 PSI | 35               | 4"     | G 4" -11     | 99          | 130,2     | 162       | 77,8      | 146       | 48        | 27        | 34        | M 16 |
| GFS 116 G 3 1/2 | 3000 PSI | 35               | 4"     | G 3.1/2" -11 | 89          | 130,2     | 162       | 77,8      | 146       | 48        | 27        | 34        | M 16 |
| GFS 401 G       | 6000 PSI | 400              | 1/2"   | G 1/2" -14   | 13          | 40,5      | 54        | 18,2      | 46        | 36        | 16        | 19        | M 8  |
| GFS 401 G 3/8   | 6000 PSI | 400              | 1/2"   | G 3/8" -19   | 13          | 40,5      | 54        | 18,2      | 46        | 36        | 16        | 19        | M 8  |
| GFS 402 G       | 6000 PSI | 400              | 3/4"   | G 3/4" -14   | 19          | 50,8      | 71        | 23,8      | 55        | 35        | 21        | 22        | M 10 |
| GFS 402 G 1/2   | 6000 PSI | 400              | 3/4"   | G 1/2" -14   | 13          | 50,8      | 71        | 23,8      | 55        | 35        | 21        | 22        | M 10 |
| GFS 403 G       | 6000 PSI | 400              | 1"     | G 1" -11     | 25          | 57,2      | 81        | 27,8      | 65        | 42        | 25        | 24        | M 12 |
| GFS 403 G 3/4   | 6000 PSI | 400              | 1"     | G 3/4" -14   | 19          | 57,2      | 81        | 27,8      | 65        | 42        | 25        | 24        | M 12 |
| GFS 404 G       | 6000 PSI | 400              | 1.1/4" | G 1.1/4" -11 | 32          | 66,7      | 95        | 31,8      | 78        | 45        | 27        | 25        | M 14 |
| GFS 404 G 1     | 6000 PSI | 400              | 1.1/4" | G 1" -11     | 25          | 66,7      | 95        | 31,8      | 78        | 45        | 27        | 25        | M 14 |
| GFS 405 G       | 6000 PSI | 400              | 1.1/2" | G 1.1/2" -11 | 38          | 79,4      | 112       | 36,5      | 94        | 50        | 30        | 28        | M 16 |
| GFS 405 G 1 1/4 | 6000 PSI | 400              | 1.1/2" | G 1.1/4" -11 | 32          | 79,4      | 112       | 36,5      | 94        | 50        | 30        | 28        | M 16 |
| GFS 406 G       | 6000 PSI | 400              | 2"     | G 2" -11     | 51          | 96,8      | 134       | 44,5      | 114       | 65        | 37        | 30        | M 20 |
| GFS 406 G 1 1/2 | 6000 PSI | 400              | 2"     | G 1.1/2" -11 | 38          | 96,8      | 134       | 44,5      | 114       | 65        | 37        | 30        | M 20 |

PN = 额定压力 PB = 最大工作压力

## 产品变体

GFS G U (3000 / 6000 PSI) SAE旋入式对接法兰, BSP, 仅法兰