

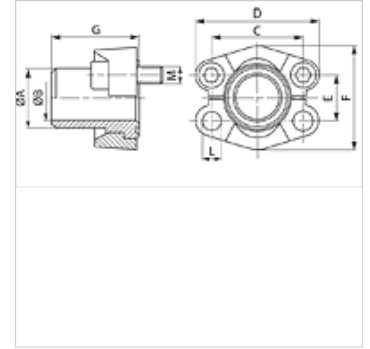
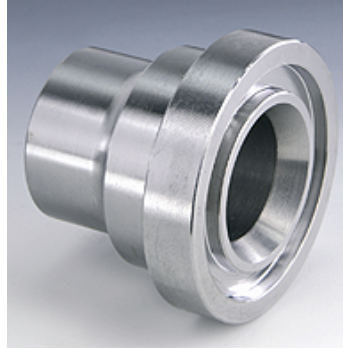
SFS (6000 PSI)

SAE焊接环

HANSA FLEX

属性

| | |
|------|-------------------------|
| 压力系列 | 6000 psi |
| 标准 | SAE J 518 C ISO 6162 |
| 结构形式 | 直道 |
| 结构类型 | SAE焊接束 |
| 供货范围 | 仅预焊接束 |
| 原料 | S355J2G3 (ST52.3) |



提示

给出的最大工作压力针对的是法兰!实际工作压力视管(壁厚)和管的品质而定!
推荐使用的螺钉在M(米制)或M(unc)列中列出。

货品

| 名称 | PB 10.9 (bar) | 结构尺寸 | 管 | A (mm) | Ø B (mm) | C (mm) | D (mm) | E (mm) | F (mm) | G (mm) | L (mm) | M 米制 | M unc |
|---------------|------------------|--------|------------|-----------|-------------|-----------|-----------|-----------|-----------|-----------|-----------|-----------|----------------|
| SFS 6001-16 | 400 | 1/2" | 16 x 2 | 16,0 | 12,0 | 40,5 | 56 | 18,2 | 47,2 | 34 | 8,5 | M 8 x 30 | 5/16" x 1.1/4" |
| SFS 6001-21.3 | 400 | 1/2" | 21.3 x 4.5 | 21,3 | 11,9 | 40,5 | 56 | 18,2 | 47,2 | 34 | 8,5 | M 8 x 30 | 5/16" x 1.1/4" |
| SFS 6002-20 | 400 | 3/4" | 20 x 2.5 | 20,0 | 15,0 | 50,8 | 71 | 23,8 | 60,0 | 38 | 10,5 | M 10 x 35 | 3/8" x 1.1/2" |
| SFS 6002-25 | 400 | 3/4" | 25 x 3.5 | 25,0 | 18,0 | 50,8 | 71 | 23,8 | 60,0 | 38 | 10,5 | M 10 x 35 | 3/8" x 1.1/2" |
| SFS 6002-26.9 | 400 | 3/4" | 26.9 x 5.6 | 26,9 | 15,7 | 50,8 | 71 | 23,8 | 60,0 | 38 | 10,5 | M 10 x 35 | 3/8" x 1.1/2" |
| SFS 6003-30 | 400 | 1" | 30 x 4 | 30,0 | 22,0 | 57,2 | 81 | 27,8 | 69,6 | 40 | *1 | M 12 x 45 | 7/16" x 1.3/4" |
| SFS 6003-33.7 | 400 | 1" | 33.7 x 7.1 | 35,0 | 19,0 | 57,2 | 81 | 27,8 | 69,6 | 40 | *1 | M 12 x 45 | 7/16" x 1.3/4" |
| SFS 6003-38 | 400 | 1" | 38 x 5 | 38,0 | 28,0 | 57,2 | 81 | 27,8 | 69,6 | 40 | *1 | M 12 x 45 | 7/16" x 1.3/4" |
| SFS 6004-38 | 400 | 1.1/4" | 38 x 5.5 | 38,0 | 27,0 | 66,7 | 95 | 31,8 | 77,2 | 45 | *2 | M 14 x 50 | 1/2" x 1.3/4" |
| SFS 6004-42.4 | 400 | 1.1/4" | 42.4 x 6.3 | 42,4 | 35,8 | 66,7 | 95 | 31,8 | 77,2 | 45 | 14,5 | M 14 x 50 | 1/2" x 1.3/4" |
| SFS 6005-45 | 400 | 1.1/2" | 45 x 6.5 | 45,0 | 32,0 | 79,4 | 113 | 36,5 | 95,0 | 50 | 16,7 | M 16 x 55 | 5/8" x 2" |
| SFS 6005-48.3 | 400 | 1.1/2" | 48.3 x 8.8 | 48,3 | 30,7 | 79,4 | 113 | 36,5 | 95,0 | 50 | 17,0 | M 16 x 55 | 5/8" x 2" |
| SFS 6006-65 | 400 | 2" | 65 x 8 | 65,0 | 46,0 | 96,8 | 133 | 44,5 | 113,8 | 58 | 21,0 | M 20 x 65 | 3/4" x 2.1/2" |

PN = 额定压力 PB = 最大工作压力

*1) = 可选12.0或12.5 - *2) = 可选13.5或14.5

产品变体

| | |
|------------------|--------------------------|
| SFS M (6000 PSI) | SAE焊接环, 带2个法兰半部、螺钉组件和O形圈 |
| SFS U (6000 PSI) | SAE焊接环, 带2个法兰半部、螺钉组件和O形圈 |