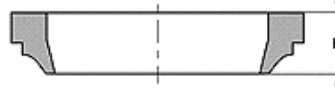
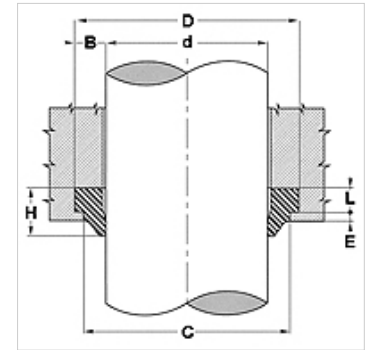


属性

| | |
|-----------|------------------|
| 结构类型 | 刮刀 |
| 滑动速度 max. | 0,5 m/s |
| 温度 min. | -30 °C |
| 温度 max. | 80 °C |
| 适用介质 | 矿物油 |
| 装配 | 将刮刀变成近圆形并压入支撑环槽内 |
| 原料 | PUR |
| 应用 | 液压 |



| Toleranz / Tolerance | | | |
|----------------------|-----|-----|------------|
| d | D | C | L |
| h11 | H11 | H11 | +0,20 0 |



描述

简单的装配
高抗磨损强度

货品

| 名称 | d (mm) | D (mm) | L (mm) | C (mm) | E (mm) |
|-----------|-----------|-----------|-----------|-----------|-----------|
| DSR-P 12 | 12 | 20 | 4,0 | 18 | 1,0 |
| DSR-P 16 | 16 | 24 | 4,0 | 22 | 1,0 |
| DSR-P 18 | 18 | 26 | 4,0 | 24 | 1,0 |
| DSR-P 20 | 20 | 28 | 4,0 | 26 | 1,0 |
| DSR-P 22 | 22 | 30 | 4,0 | 28 | 1,0 |
| DSR-P 25 | 25 | 33 | 4,0 | 31 | 1,0 |
| DSR-P 28 | 28 | 36 | 4,0 | 34 | 1,0 |
| DSR-P 30 | 30 | 38 | 4,0 | 36 | 1,0 |
| DSR-P 32 | 32 | 40 | 4,0 | 38 | 1,0 |
| DSR-P 35 | 35 | 43 | 4,0 | 41 | 1,0 |
| DSR-P 36 | 36 | 44 | 4,0 | 42 | 1,0 |
| DSR-P 40 | 40 | 48 | 4,0 | 46 | 1,0 |
| DSR-P 42 | 42 | 50 | 4,0 | 48 | 1,0 |
| DSR-P 45 | 45 | 53 | 4,0 | 51 | 1,0 |
| DSR-P 50 | 50 | 58 | 4,0 | 56 | 1,0 |
| DSR-P 55 | 55 | 63 | 4,0 | 61 | 1,0 |
| DSR-P 56 | 56 | 65 | 4,0 | 62 | 1,0 |
| DSR-P 60 | 60 | 68 | 4,0 | 66 | 1,0 |
| DSR-P 63 | 63 | 71 | 4,0 | 69 | 1,0 |
| DSR-P 65 | 65 | 73 | 4,0 | 71 | 1,0 |
| DSR-P 70 | 70 | 78 | 4,0 | 76 | 1,0 |
| DSR-P 75 | 75 | 83 | 4,0 | 81 | 1,0 |
| DSR-P 80 | 80 | 88 | 4,0 | 86 | 1,0 |
| DSR-P 85 | 85 | 93 | 4,0 | 91 | 1,0 |
| DSR-P 90 | 90 | 98 | 4,0 | 96 | 1,0 |
| DSR-P 95 | 95 | 103 | 4,0 | 101 | 1,0 |
| DSR-P 100 | 100 | 108 | 4,0 | 106 | 1,0 |
| DSR-P 110 | 110 | 122 | 5,5 | 119 | 1,5 |
| DSR-P 120 | 120 | 132 | 5,5 | 129 | 1,5 |
| DSR-P 125 | 125 | 137 | 5,5 | 134 | 1,5 |
| DSR-P 130 | 130 | 142 | 5,5 | 139 | 1,5 |
| DSR-P 135 | 135 | 147 | 5,5 | 144 | 1,5 |
| DSR-P 140 | 140 | 152 | 5,5 | 149 | 1,5 |