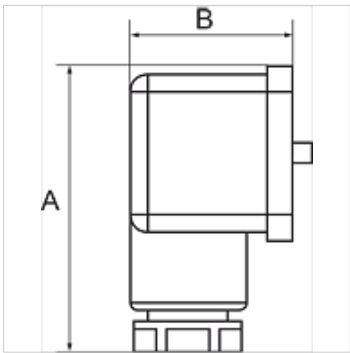


K-DRS ELK GERAETESTECKER

Pressure switches, connection with plug connector, type A acc. to DIN 43650



属性	
应用范围	Pneumatic applications
开关频率	200/min.
开关电压	max. 250 V AC / 28 V DC
保护等级	IP 65 (DIN 43650), IP 67 (M 12 x 1)
温度范围	-10 °C to +80 °C
调节盖罩	Aluminium, powder-coated
壳体	Special die-cast material
膜片,密封	NBR



提示
其它数据应客户要求提供。

描述
For converting pneumatic to electrical signals. Designed for use in rough vacuum applications (technical vacuum). Universal switch type, suitable as NC, NO or changeover contact. These devices are free from paint-wetting impairment substances (PWIS).

货品				
名称	接口	调节范围	A (mm)	B (mm)
K- 07 30 28 45	G 1/4	0,2 - 2,0 bar	48,0	28,0
K- 07 30 28 46	G 1/4	0,5 - 8,0 bar	48,0	28,0
K- 07 30 28 47	G 1/4	1,0 - 16,0 bar	48,0	28,0