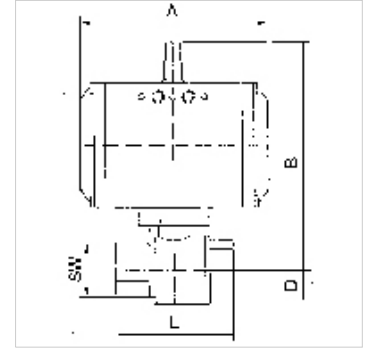


# K-BKR STELLANTR E FEDER MS

Brass ball valves, single-acting actuator - spring to close

## 属性

结构类型	Pneumatic actuators, in double- or single acting version, with integrated end-position feedback
工作压力	max. 40 bar (to DN 32); max. 25 bar (from DN 40); max. 16 bar (from DN 65)
工作温度	-20 °C to +70 °C
旋转角	90 °
控制压力	5.5 bar
阀门适配器	Supplied as standard
驱动器	aluminium eloxed
驱动器密封件	NBR
球阀	Chrome-plated brass, with ISO-flange plate
球阀密封件	PTFE/FKM
触发	



## 提示

其它数据应客户要求提供。

## 描述

2-way cock, full bore

## 货品

名称	DN	螺纹	A (mm)	B (mm)	D (mm)	L (mm)	SW (mm)
K- 07 30 02 27	15	Rp 1/2	133,0	142,0	17,0	75,0	26
K- 07 30 02 28	20	Rp 3/4	133,0	145,0	20,0	80,0	32
K- 07 30 02 29	25	Rp 1	133,0	148,0	25,0	90,0	41
K- 07 30 02 30	32	Rp 1 1/4	137,0	173,0	30,0	110,0	50
K- 07 30 02 31	40	Rp 1 1/2	137,0	180,0	36,0	120,0	55
K- 07 30 02 32	50	Rp 2	180,0	203,0	45,0	140,0	70
K- 07 30 02 33	65	Rp 2 1/2	209,0	230,0	57,0	155,0	83
K- 07 30 02 34	80	Rp 3	209,0	242,0	68,0	182,0	98