

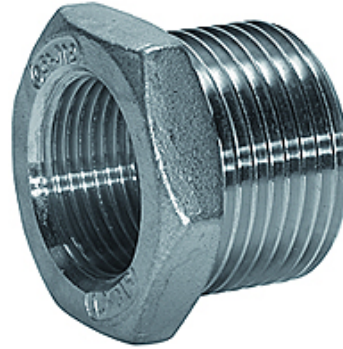
K-RD NIPPEL 6 KT

Reducing nipples, hexagonal

HANSA FLEX

属性

工作压力	Max. 20 bar
外螺纹	Parallel to DIN EN ISO 228-1
内螺纹	Parallel to DIN EN ISO 228-1
原料	Stainless steel 1.4408



提示

The dimensions of the standard screw fittings may change slightly during the life of the catalogue as a result of optimisation processes. 其它数据应客户要求提供。

货品

名称	外螺纹	内螺纹	L1 (mm)	L2 (mm)	SW
K- 07 40 15 51	G 1/4	G 1/8	18,1	14,0	17 mm
K- 07 40 15 52	G 3/8	G 1/8	19,0	12,9	21 mm
K- 07 40 15 53	G 3/8	G 1/4	19,0	13,0	21 mm
K- 07 40 15 54	G 1/2	G 1/4	22,0	15,6	25 mm
K- 07 40 15 55	G 1/2	G 3/8	24,7	16,0	26 mm
K- 07 40 15 56	G 3/4	G 3/8	25,0	15,8	30 mm
K- 07 40 15 57	G 3/4	G 1/2	25,0	15,9	31 mm
K- 07 40 15 58	G 1	G 1/2	29,0	20,0	37 mm
K- 07 40 15 59	G 1	G 3/4	29,0	20,0	38 mm
K- 07 40 15 60	G 1 1/4	G 3/4	30,0	22,4	46 mm
K- 07 40 15 61	G 1 1/4	G 1	30,0	22,2	46 mm
K- 07 40 15 62	G 1 1/2	G 1	32,0	23,0	53 mm
K- 07 40 15 63	G 1 1/2	G 1 1/4	32,0	23,0	53 mm
K- 07 40 15 64	G 2	G 1	36,0	26,0	63 mm
K- 07 40 15 65	G 2	G 1 1/2	36,0	26,0	63 mm