

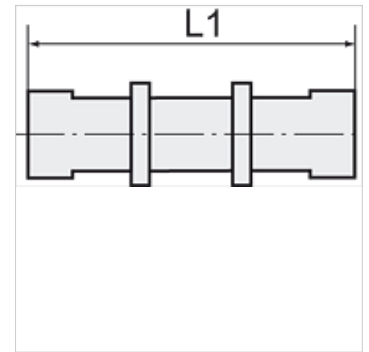
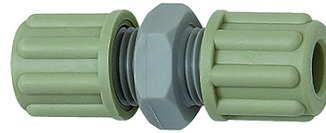
# K-SCHLAUCH VB

Hose connectors

**HANSA FLEX**

## 属性

工作压力	Dependent on operating temperature; Max. 10 bar (at 20 °C); Max. 1 bar (at 60 °C)
螺旋接头体	Polyamide (PA)
夹紧环	Polypropylene (PP)
螺母	Polypropylene (PP)



## 提示

其它数据应客户要求提供。

## 描述

Manufactured from high impact-resistant, UV-stabilised engineering plastic, extremely resistant to weathering. Good chemical resistance to benzene, diesel oil, fuel oil and alkalis. <br>Not suitable for use with acids.

## 货品

名称	用于软管	L1 (mm)	SW
K- 07 40 32 62	4 mm / 6 mm	39,0	14 mm
K- 07 40 32 63	6 mm / 8 mm	49,0	19 mm
K- 07 40 32 64	8 mm / 10 mm	55,0	22 mm
K- 07 40 32 65	9 mm / 12 mm	64,0	24 mm