

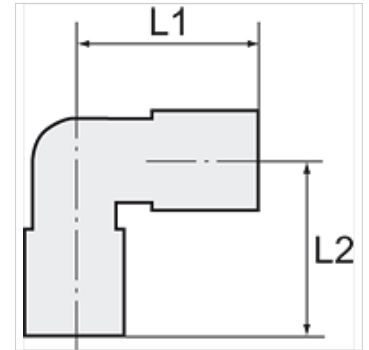
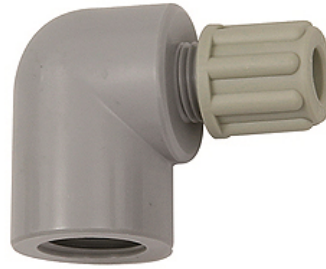
K-W90 GAM IG

Female elbows with female G thread

HANSA FLEX

属性

工作压力	Dependent on operating temperature; Max. 10 bar (at 20 °C); Max. 1 bar (at 60 °C)
螺旋接头体	Polyamide (PA)
夹紧环	Polypropylene (PP)
螺母	Polypropylene (PP)



提示

其它数据应客户要求提供。

描述

Manufactured from high impact-resistant, UV-stabilised engineering plastic, extremely resistant to weathering. Good chemical resistance to benzene, diesel oil, fuel oil and alkalis.
Not suitable for use with acids.

货品

名称	螺纹	用于软管	L1 (mm)	L2 (mm)
K- 07 40 32 98	G 1/8	4 mm / 6 mm	26,0	17,0
K- 07 40 32 99	G 1/8	6 mm / 8 mm	29,0	17,0
K- 07 40 33 00	G 1/4	4 mm / 6 mm	29,0	20,0
K- 07 40 33 01	G 1/4	6 mm / 8 mm	32,0	20,0
K- 07 40 33 02	G 1/4	8 mm / 10 mm	35,0	20,0