

K-SCHOTTNIPPEL ES

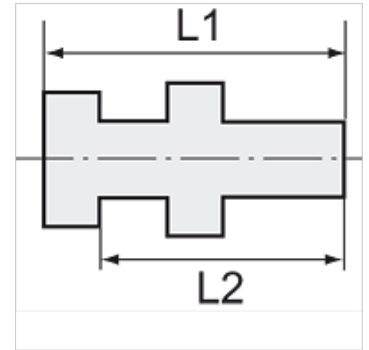
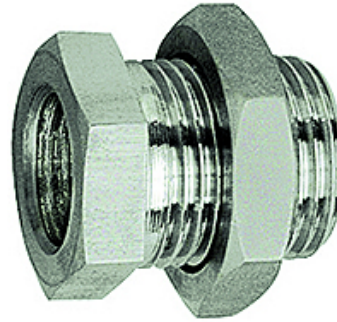
Bulkhead nipples

HANSA FLEX

属性

工作压力 Max. 20 bar

原料 不锈钢 1.4571



提示

The dimensions of the standard screw fittings may change slightly during the life of the catalogue as a result of optimisation processes. 其它数据应客户要求提供。

附加信息

Further types and dimensions on request.

货品

名称	外螺纹	内螺纹	L1 (mm)	L2 (mm)	SW1 (mm)	SW2 (mm)
K- 07 40 34 24	G 1/4	G 1/8	18,0	14,0	17	17
K- 07 40 34 25	G 3/8	G 1/4	22,0	17,0	19	24
K- 07 40 34 26	G 1/2	G 3/8	27,0	21,0	24	24