

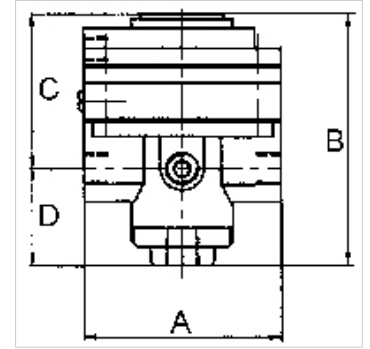
# K-PRAEZI DRUCKREGL PNEU FERN

Precision pressure regulators

**HANSA FLEX**

## 属性

入口压力	Max. 16 bar
介质温度	max. 60 °C
环境温度	Max. 60 °C
适用介质	Micro-filtered, unoled compressed air (0.01 µm)
压力计接口	G 1/4
流量	3000 l/min
排气接口	G 3/8 (for mounting a silencer)
控制压力	Max. 10 bar
操纵空气接口	G 1/8
密封材料	NBR
壳体	Die-cast zinc, painted black
自身空气消耗	6 l/min at Pin = 16 bar



## 提示

Attention! A set of wearing parts cannot be supplied! These pressure regulators may only be opened in the factory! The given flow rates are based on the following parameters: 3000 l/min: P1: 5 bar, P2: 3 bar,  $\Delta p \leq 0,1$  bar.

其它数据应客户要求提供。

## 描述

With high flow rate and large secondary relief port. Pneumatically controlled diaphragm pressure regulators with large secondary relief port for applications requiring an extremely accurate working pressure, especially at high flow rates. We recommend our »multifix« series of pilot controllers.

## 附加信息

1500 l/min: P1: 10 bar, P2: 7 bar,  $\Delta p \leq 0,1$  bar.

## 货品

名称	螺纹	调节范围	A (mm)	B	C (mm)	D (mm)
K- 07 25 09 35	G 1/2	0.05 - 7 bar (max. 10 bar)	82,0	108,0 mm	64,5	43,5

## 备件

K-HALTERBAUSATZ STANDARD	Holder
K-KM MS	Hexagonal lock nuts, brass
K-SCHALLDAEPFER VYON	Vyon silencers
K-FILTERELEMENT	Filter element
K-XV AGM 2	Double nipples, parallel male thread