

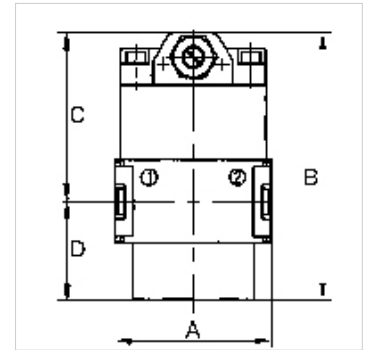
K-ANFAV MULTIFIX MINI

Start-up valves

HANSA FLEX

属性

入口压力	Min. 2.5 bar, max. 16 bar
介质温度	max. 60 °C
环境温度	Max. 60 °C
流量	1600 l/min
密封材料	NBR
壳体	Die-cast zinc
流量值测量	At P1 = 6 bar and pressure drop $\Delta p = 1$ bar



提示

If several devices in the »multifix-mini« Series are assembled together, the maximum working pressure is 12 bar.
其它数据应客户要求提供。

描述

Seat valves operated by secondary pressure for controlled pressurisation of pneumatic systems. The full cross-section of the regulator is opened at 50% of the input pressure. With adjustable restrictor!

货品

名称	螺纹	A (mm)	B	C (mm)	D (mm)
K- 07 25 11 53	G 1/4	45,0	77,5 mm	48,5	29,0

附件

K-HALTERBAUSATZ Holder

备件

K-KOPPELPAKET MEHR Coupling packet