

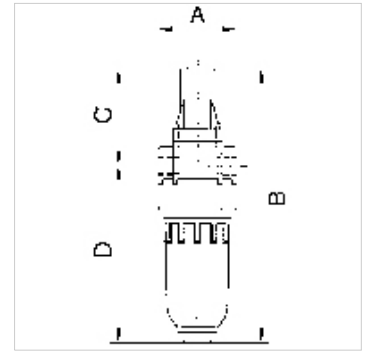
K-NEBELOE METALLBEHAE T STANDARD-M'

Oil-mist lubricators with metal bowl and metal sight dome

HANSA FLEX

属性

入口压力	Max. 16 bar (polycarbonate bowl), Max. 25 bar (metal bowl)
介质温度	max. 60 °C
环境温度	Max. 60 °C
流量	650 l/min
密封材料	NBR
壳体	Die-cast zinc, painted silver
泄水头	PA (polycarbonate bowl), Zinc-glass-NBR (metal bowl)
油种类	CL 32 acc. to DIN 51517 - ISO VG 32
流量值测量	At P1 = 6 bar and pressure drop $\Delta p = 1$ bar
更多注明信息	User manual on request



描述

Proportional lubricators in compact design, oil can be filled under pressure.

货品

名称	螺纹	A (mm)	B	C (mm)	D (mm)	DN
K- 07 25 08 84	G 1/8	40,0	141,0 mm	49,0	92,0	5
K- 07 25 08 86	G 1/4	40,0	141,0 mm	49,0	92,0	5

备件

K-ERSATZBEHAELTER MULTI MINI	Spare tank »multifix-mini« & »standard-mini«
K-TROPFAUFSATZ POLYCARBO	Drip attachment polycarbonate
K-TROPFAUFSATZ METALL	Drip attachment metal
K-LOESBARE DOPPELNIPPEL MS	Double nipples
K-XV AGM MS NI	Double nipples, parallel male thread, nickel-plated brass