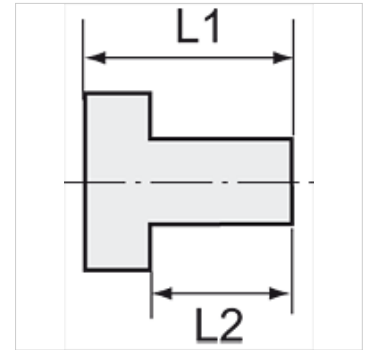
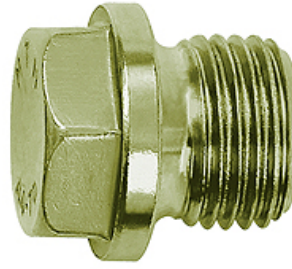


# K-VHR 6KT BUND ES

Hexagon head screw plugs with collar

## 属性

工作压力	Max. 20 bar
结构类型	外六角闭锁螺钉
原料	不锈钢 1.4571



## 提示

The dimensions of the standard screw fittings may change slightly during the life of the catalogue as a result of optimisation processes. 其它数据应客户要求提供。

## 附加信息

Further types and dimensions on request.

## 货品

名称	螺纹	L1 (mm)	L2 (mm)	SW
K- 07 40 44 48	G 1/8	17,0	8,0	10 mm
K- 07 40 44 50	G 1/4	21,0	12,0	13 mm
K- 07 40 44 52	G 3/8	21,0	12,0	17 mm
K- 07 40 44 54	G 1/2	26,0	14,0	19 mm
K- 07 40 44 56	G 3/4	30,0	16,0	24 mm
K- 07 40 44 58	G 1	32,0	16,0	27 mm