

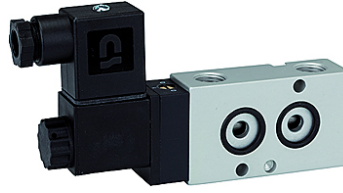
K-WV 3/2 LB NAMUR GETAUSCHT

3/2-way spool valves with NAMUR style interface, NC, ports 1 and 3 or 2 and 3 swapped

HANSA FLEX

属性

适用介质	Air, neutral gases, filtered
工作压力	1.5 to 10 bar
工作温度	-20 °C to +70 °C
电接口	Plug connector PG 9
包含在供货范围内	Plug connector PG 9, 1 coding pin, 2 O-rings, 2 fixing screws
功率消耗	3 W=/5 VA~
壳体	Aluminium, anodised
滑座	Stainless steel
密封材料	NBR



提示

其它数据应客户要求提供。

描述

3/2 and 5/2-way spool valves, monostable, with air purging function and pneumatic spring return. With latching manual operator and optional outgoing air restriction.

Two or three-piece service units with excellent flow rates in modern design.
Lockable diaphragm pressure regulator with secondary ventilation, oil can be filled without interrupting operation.

货品

名称	电压	接口	DN	流量 (L/min)
K- 07 15 00 05	230 V, 50 Hz	G 1/4	7	1250
K- 07 15 00 06	24 V DC	G 1/4	7	1250