

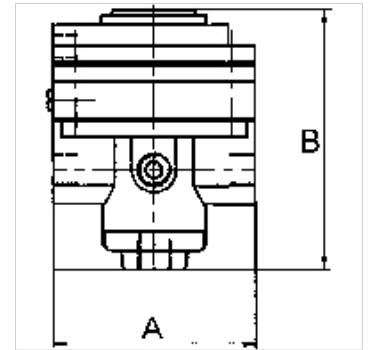
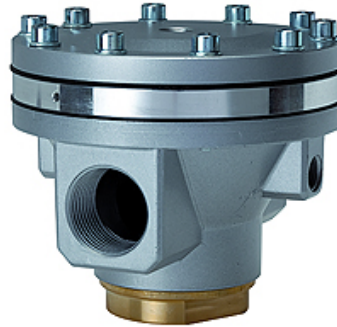
K-DRG PNEU FERNGESTEUERT

Pressure regulators pneumatic remote control

HANSA FLEX

属性

入口压力	Max. 25 bar
出口压力	Acc. to pilot regulator
介质温度	max. 80 °C
气动遥控接口	G 1/4
工作温度	Max. 80 °C
密封材料	NBR
壳体	Die-cast zinc (G1/2). Aluminium (G3/4 to G2)
流量值测量	At P1 = 8 bar, P2 = 6 bar and pressure drop $\Delta p = 1$ bar



提示

其它数据应客户要求提供。

描述

Diaphragm pressure regulators, self-relieving, with pneumatic remote control. The full functionality is assured in combination with a pilot regulator. We recommend using one of our precision or standard pressure regulators with a G 1/4 port as the pilot regulator. To design a closed control loop similar to the sketch below (K-07250511), please use our precision pilot regulator (feedback).

货品

名称	螺纹	流量 (L/min)	A (mm)	B
K- 07 25 05 05	G 1/2	5200	82,0	68,0 mm
K- 07 25 05 06	G 3/4	14000	117,0	108,0 mm
K- 07 25 05 07	G 1	14000	117,0	108,0 mm
K- 07 25 05 08	G 1 1/4	35000	125,0	122,0 mm
K- 07 25 05 09	G 1 1/2	35000	125,0	122,0 mm
K- 07 25 05 10	G 2	50000	160,0	197,0 mm

附件

K-HALTERBAUSATZ STANDARD Holder