

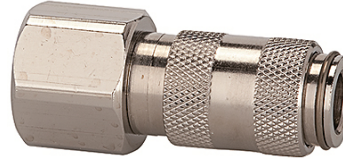
K-SVKM NW 2,7 IG MS NI

Quick disconnect couplings DN 2.7, nickel-plated brass, female

HANSA FLEX

属性

工作压力	0 - 35 bar, maximum static working pressure (non-pulsating)
空气流量	165 l/min (at 6 bar and $\Delta p = 0.5$ bar)
介质温度	-20 °C to +100 °C
壳体,套管,阀体	Nickel-plated brass
弹簧,涨圈,球体	stain less steel
密封材料	NBR



提示

其它数据应客户要求提供。

描述

One-hand quick disconnect coupling, one side sealing, extremely compact, with a large bore and a small pressure drop. Ideal for: Medical & Dental equipment, instrumentation and control, laboratory equipment, chemical applications, small tools, analysis, miniature pneumatics, engineering.

货品

名称	接口	长度 (mm)	SW (mm)
K- 07 35 06 20	M 5 female	25,0	9
K- 07 35 06 21	G 1/8 female	28,0	12