

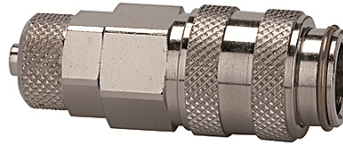
K-SVKM NW 5 SCHL MS NI1

Quick disconnect couplings DN 5, nickel-plated brass with hose connector

HANSA FLEX

属性

| | |
|----------|---|
| 工作压力 | 0 - 35 bar, maximum static working pressure (non-pulsating) |
| 空气流量 | 560 l/min (at 6 bar and $\Delta p = 0.5$ bar) |
| 介质温度 | -20 °C to +100 °C |
| 壳体,套管,阀体 | Nickel-plated brass |
| 弹簧,涨圈,球体 | Stainless steel |
| 密封材料 | NBR |



提示

其它数据应客户要求提供。

描述

One-hand quick disconnect couplings, one side sealing, compact with a large bore and only a small pressure drop. Ideal for: Pneumatic tools, pneumatic applications, medical equipment, instrumentation and control, laboratory, chemical applications, analysis, metering techniques.

货品

| 名称 | 接口 | 长度 (mm) | SW (mm) |
|----------------|-----------------------|------------|------------|
| K- 07 35 06 65 | Hose connection 6 x 4 | 43,0 | 14 |
| K- 07 35 06 66 | Hose connection 8 x 6 | 43,0 | 14 |