

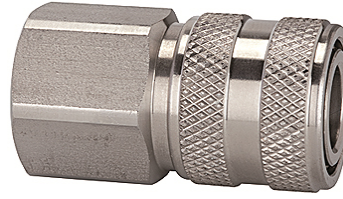
K-SVKM NW 7,2 IG VA

Quick disconnect couplings DN 7.2, stainless steel, female

HANSA FLEX

属性

工作压力	1 - 35 bar and rough vacuum
空气流量	1.000 l/min (at 6 bar and $\Delta p = 0.5$ bar)
介质温度	-25 °C to +200 °C
壳体, 套管, 阀体	Stainless steel 1.4305
弹簧、涨圈	Stainless steel 1.4310
锁销	Stainless steel 1.4401
密封材料	FKM



提示

其它数据应客户要求提供。

描述

Classic standard coupling type, one side sealing, made of stainless steel. The closed sleeve protects the coupling from dirt. We recommend the use of stainless steel plugs and stems!

货品

名称	接口	长度 (mm)	SW (mm)
K- 07 35 07 62	G 1/4 female	43,0	22
K- 07 35 07 63	G 3/8 female	43,0	22
K- 07 35 07 64	G 1/2 female	46,0	24

附加元件

K-NIPPEL KUPPL NW7 AG VA 2	Plugs for couplings DN 7.2 - DN 7.8, stainless steel 1.4305, male
K-NIPPEL KUPPL NW7 IG VA 1	Plugs for couplings DN 7.2 - DN 7.8, stainless steel 1.4305, female
K-TUE 7,2 7,8 VA 2	Stems for couplings DN 7.2 - DN 7.8, stainless steel 1.4305