

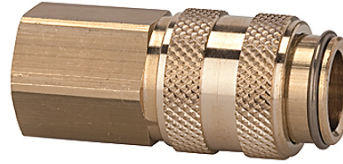
K-SVKM NW 5 ABSP IG MS

Quick disconnect couplings DN 5, both sides sealing, brass, female

HANSA FLEX

属性

工作压力	0 - 35 bar, maximum static working pressure (non-pulsating)
空气流量	310 l/min (at 6 bar and $\Delta p = 0.5$ bar)
介质温度	-20 °C to +100 °C
壳体,套管,阀体	Brass
弹簧,涨圈,球体	stain less steel
密封材料	NBR



提示

其它数据应客户要求提供。

描述

Both the coupling and the self-sealing plug are fitted with a valve. Connection: Both valves open and the medium is allowed to pass. Disconnection: Both valves close and the medium is prevented from escaping.

货品

名称	接口	长度 (mm)	SW (mm)
K- 07 35 06 75	G 1/8 female	38,0	14
K- 07 35 06 76	G 1/4 female	38,0	17