

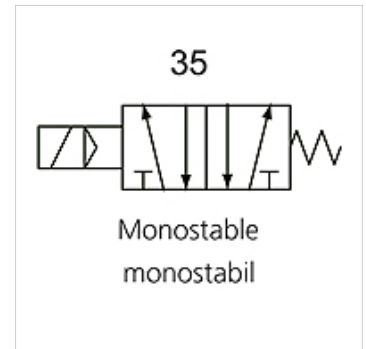
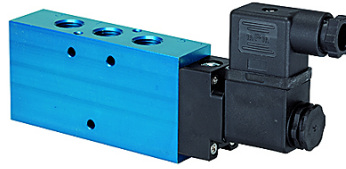
K-WV 5/2 EINS ELEKTRO

5/2-way spool valves, single solenoid

HANSA FLEX

属性

| | |
|--------------|---|
| 功能 | 5/2-way |
| 工作压力 | 2.5 - 10 bar; Max. vacuum 10 bar (external pilot air) |
| 最小工作压力 | 2,5 bar |
| 温度范围 | -10 °C to +60 °C |
| 流量 6 巴和 10 巴 | 1500 NI/min (G 1/4), 4600 NI/min (G 1/2) |
| 电接口 | Coupler plug PG 9 - form B |
| 保护等级 | IP 65 (DIN 46244) |
| 壳体 | Anodised aluminium, blue |
| 活塞滑阀 | Stainless steel |
| 密封材料 | NBR |



提示

其它数据应客户要求提供。

描述

This valve design, featuring the Tapered Tee Seal®, offers the ability to run without lubrication and supports almost any compressed air quality. The valves are largely resistant to dirt and can thus also be used under extreme conditions without any problems. Leakage is now a thing of the past and the spool no longer sticks, even after long idle periods.

货品

| 名称 | 接口 | 电压 | DN | 电路图编号 | 控制 |
|----------------|--------|-----------------|----|-------|----|
| K- 07 15 02 21 | G 1/4 | 24 V DC | 8 | 35 | |
| K- 07 15 02 22 | G 1/2" | 24 V DC | 15 | 35 | |
| K- 07 15 02 23 | G 1/4 | 230 V AC, 50 Hz | 8 | 35 | |
| K- 07 15 02 24 | G 1/2" | 230 V AC, 50 Hz | 15 | 35 | |