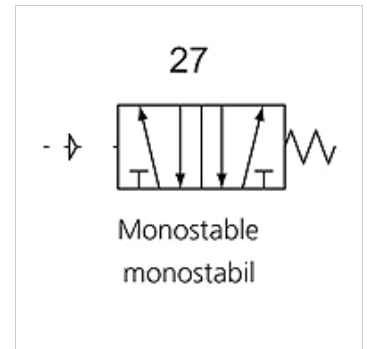
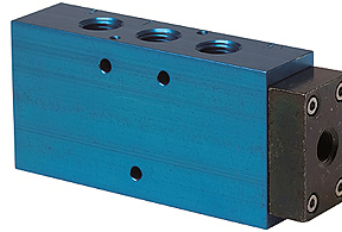


K-WV 5/2 EINS PNEU

5/2-way spool valves, single pneumatic

属性

功能	5/2-way
工作压力	2.5 - 10 bar; Max. vacuum 10 bar (external pilot air)
最小工作压力	2,5 bar
温度范围	-10 °C to +60 °C
流量 6 巴和 10 巴	1500 NI/min (G 1/4), 4600 NI/min (G 1/2)
电接口	Coupler plug PG 9 - form B
保护等级	IP 65 (DIN 46244)
壳体	Anodised aluminium, blue
活塞滑阀	Stainless steel
密封材料	NBR



提示

其它数据应客户要求提供。

描述

This valve design, featuring the Tapered Tee Seal®, offers the ability to run without lubrication and supports almost any compressed air quality. The valves are largely resistant to dirt and can thus also be used under extreme conditions without any problems. Leakage is now a thing of the past and the spool no longer sticks, even after long idle periods.

货品

名称	接口	DN	电路图编号	控制
K- 07 15 02 17	G 1/4	8	27	
K- 07 15 02 18	G 1/2"	15	27	