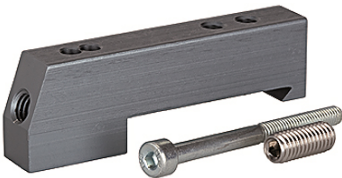


# K-ADA HUTPROFIL

Adapter for DIN rail



属性	
适用介质	Filtered, unlubricated or lubricated compressed air. If lubrication is used, it must be continuous.
工作压力	Max. vacuum 10 bar (external pilots), 3 to 7 bar (internal pilots as standard)
控制压力	3 - 7 bar
温度范围	-10 °C to +60 °C
流量	200 NI/min (Ø 4), 500 NI/min (Ø 6), 800 NI/min (Ø 8)
触发次数	Max. 16 (e.g. 16 spring return valves)
手动辅助操纵件	Latching (bistable), Monostable (non-latching) version also available on request
功率消耗	0.6 W per pilot
保护等级	IP 65



## 提示

其它数据应客户要求提供。

## 描述

These compact valve terminals, with a maximum flow rate of 800 NI/min, can be individually adapted to the specific conditions of each application thanks to the wide range of functions and various input and intermediate plates. Since each valve terminal is a customer-specific combination of a series of individual elements, the catalogue only lists the available input, intermediate and end plates as well as the different valve discs and the 25-pin multi-pole connectors.

## 附加信息

Important: The scope of supply does not include a connector. Please order separately.

## 货品

名称	定义
K- 07 15 22 43	Adapter for DIN rail