

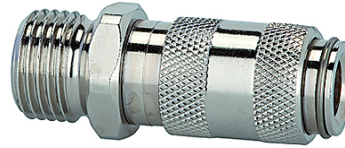
# K-SVKM NW 2,7 AG VA

Quick disconnect couplings DN 2.7, stainless steel 1.4404, male

**HANSA FLEX**

## 属性

工作压力	0 - 35 bar, maximum static working pressure (non-pulsating)
空气流量	165 l/min (at 6 bar and $\Delta p = 0.5$ bar)
介质温度	-15 °C to +200 °C
壳体,套管,阀体	Stainless steel 1.4404
弹簧,涨圈,球体	Stainless steel 1.4404
密封材料	FKM



## 提示

其它数据应客户要求提供。

## 描述

One-hand quick disconnect couplings, one side sealing, extremely compact with a large bore and only a small pressure drop. Ideal for: Medical equipment, chemical and pharmaceutical industry, laboratories, plant construction and butchers.

## 货品

名称	接口	长度 (mm)	SW (mm)
K- 07 35 12 45	M 5 male	26,0	9
K- 07 35 12 46	G 1/8 male	28,0	11