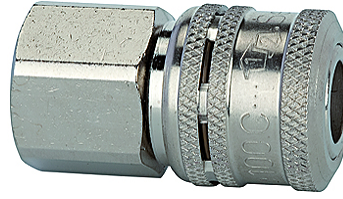


K-LKM S NW7,2 IG

Safety couplings DN 7.2, female

属性

工作压力	0 - 35 bar, maximum static working pressure (non-pulsating)
空气流量	1.100 l/min (at $\Delta p = 0.5$ bar)
介质温度	-30 °C to +100 °C
壳体,套管,阀体	Nickel-plated brass
弹簧,球体	Stainless-steel
密封材料	NBR



提示

其它数据应客户要求提供。

描述

One-hand safety coupling with double locking mechanism. Connection: Similar to standard couplings, simply by pressing the plug into the coupling. Disconnection: The first locking mechanism is accessible when the sleeve is pushed back. The coupling valve closes. Air can then be relieved from the plug side (hose). The second locking mechanism is released by actuating the unlocking sleeve again. The coupling can now be disconnected.

货品

名称	接口	长度 (mm)	SW (mm)
K- 07 35 02 95	G 1/4 female	46,0	22
K- 07 35 02 96	G 3/8 female	46,0	22
K- 07 35 02 97	G 1/2 female	49,0	24

附加元件

K-NIPPEL KUPPL NW7 AG VZ	Plugs for couplings DN 7.2 - DN 7.8, hardened, galvanised steel, male
K-NIPPEL KUPPL NW7 IG VZ 1	Plugs for couplings DN 7.2 - DN 7.8, hardened and galvanised steel, female
K-TUE 7,2 7,8 ST VZ 1	Stems for couplings DN 7.2 - DN 7.8, hardened, galvanised steel,