

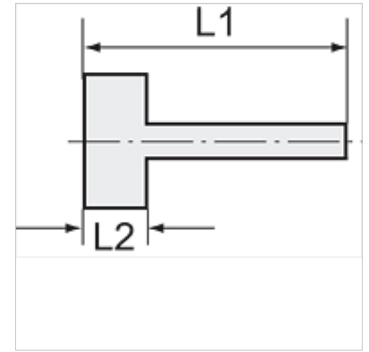
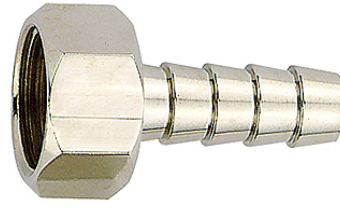
K-TUE IG ES

Female hose fittings with female thread stainless steel

HANSA FLEX

属性

工作压力	Max. 20 bar
原料	不锈钢 1.4571



提示

The dimensions of the standard screw fittings may change slightly during the life of the catalogue as a result of optimisation processes. 其它数据应客户要求提供。

附加信息

Further types and dimensions on request.

货品

名称	螺纹	用于软管	L1 (mm)	L2 (mm)	SW
K- 07 40 13 30	G 1/8	LW 6 mm	35,0	10,0	12 mm
K- 07 40 13 31	G 1/8	LW 8 mm	35,0	10,0	12 mm
K- 07 40 13 32	G 1/4	LW 6 mm	36,0	11,0	17 mm
K- 07 40 13 33	G 1/4	LW 8 mm	36,0	11,0	17 mm
K- 07 40 13 34	G 1/4	LW 10 mm	36,0	11,0	17 mm
K- 07 40 13 35	G 1/4	LW 13 mm	40,5	11,0	17 mm
K- 07 40 13 36	G 3/8	LW 6 mm	36,0	11,0	19 mm
K- 07 40 13 37	G 3/8	LW 8 mm	36,0	11,0	19 mm
K- 07 40 13 38	G 3/8	LW 10 mm	36,0	11,0	19 mm
K- 07 40 13 39	G 3/8	LW 13 mm	40,5	11,0	19 mm
K- 07 40 13 40	G 1/2	LW 6 mm	39,0	14,5	24 mm
K- 07 40 13 41	G 1/2	LW 8 mm	39,0	14,5	24 mm
K- 07 40 13 42	G 1/2	LW 10 mm	39,0	14,5	24 mm
K- 07 40 13 43	G 1/2	LW 13 mm	44,0	14,5	24 mm